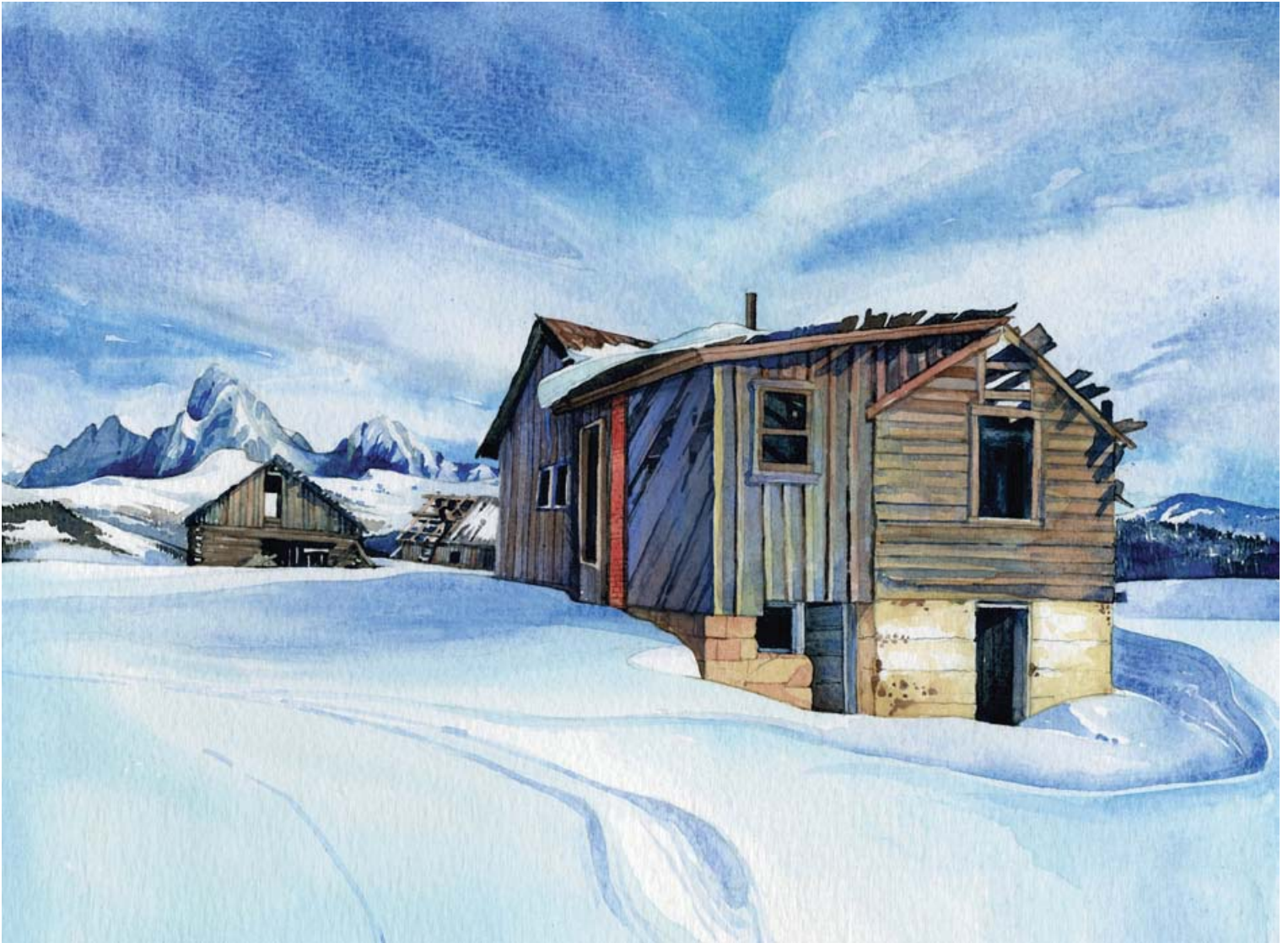


# JH Weekly

Free February 1 - 7, 2012 [www.JHweekly.com](http://www.JHweekly.com)

*"How broken is a system where people need to choose between health care and pursuing a career in the arts?"*

- Richard Abowitz, PAGE 4



'Stateline' by Meghan Hanson. Learn more about this local artist on page 3.

**Don't get sick...  
if you're poor  
in Jackson**  
The struggle for  
health care

By Aaron Wallis

PAGE 9

**News** Resi revived; Meet the  
Odd Fellas PAGE 6 - 7

**Music & Culture** What to do  
when Elk Attack; The Man in  
Black lives; Celebrating female  
ferocity PAGES 12 - 15



## LOCAL COVER ARTIST Meghan Hanson

Meghan Hanson, whose watercolor "Stateline" appears on the cover, grew up in Montana and moved to the Jackson area in 2002. Hanson and her sister Kathleen are the owners of Hanson Illustration, focusing on technical drawings, flora and fauna, magazine illustrations, logos, and greeting cards. Hanson is also a licensed architect and the owner of Natural Dwellings Architecture. She received a bachelor of arts and a master's of architecture from Montana State University in 2002. She teaches for the Artemis Institute now based in Jackson, which provides college architecture students a design-build course integrated in the community and the wild lands surrounding Jackson. To see more work by Hanson, visit [www.hansonillustration.com](http://www.hansonillustration.com) or email her [meghan@hansonillustration.com](mailto:meghan@hansonillustration.com)

## JACKSON HOLE WEEKLY STAFF

<b>EDITOR</b> Richard Abowitz <a href="mailto:rabowitz@planetjth.com">rabowitz@planetjth.com</a> <b>ART DIRECTOR</b> Jeana Haarman <a href="mailto:art@jhweekly.com">art@jhweekly.com</a> <b>STAFF REPORTER</b> Jake Nichols <b>SALES DIRECTOR</b> Jen Tillotson <a href="mailto:jen@jhweekly.com">jen@jhweekly.com</a> <a href="mailto:sales@jhweekly.com">sales@jhweekly.com</a>	<b>DESIGNERS</b> Jeana Haarman Jen Tillotson <b>ADVERTISING SALES</b> Ryan Krueger <a href="mailto:rkrueger@planetjth.com">rkrueger@planetjth.com</a> <b>COPY EDITORS</b> Robyn Vincent, Amy Early <b>ILLUSTRATOR</b> Nathan Bennett <b>PHOTO INTERN</b> Willie Wise	<b>CONTRIBUTORS</b> Lisa Van Sciver Mike Bressler Julia Hysell Evan Huggins Aaron Davis Aaron Wallis Dina Mishev <b>ADDITIONAL</b> Rob Breznsny L.A. Times Tribune Media Services
---	---	--

Publisher Mary Grossman, Planet Jackson Hole, Inc., [publisher@jhweekly.com](mailto:publisher@jhweekly.com)



JH Weekly is published every Wednesday. Copies are distributed free every week throughout Jackson Hole and the surrounding area. If you wish to distribute JH Weekly at your business, call (307) 732-0299. ©2007  
 567 W. Broadway, P.O. Box 3249, Jackson, WY 83001, 307-732-0299  
 Fax 307-732-0996, [www.jhweekly.com](http://www.jhweekly.com)

**THE LIQUOR STORE & WINE LOFT** Jackson Hole

**LOCALLY OWNED  
COMMUNITY MINDED**

## HOT SHOT OF THE WEEK



## Are you single and at least a little fun?

Love long walks, puppies and great wine?  
 Do you cry every time you watch Steel Magnolias?  
 If not, it's okay. Someone out there is waiting to meet you. Men and women over 21 eligible.

## SIGN UP TO BE A TLS HOT SHOT and GET A \$20 TLS GIFT CARD

Submit your name and contact info to [bubbler@planetjth.com](mailto:bubbler@planetjth.com) or in person to a TLS cashier.

WineLiquorBeer.com • 307-733-4466 • Albertsons is next to us!

**JACKSON HOLE EST. 1947**  
**BUFFALO MEAT CO.**  
 Free Jerky & Salami Samples in our Factory Outlet Store  
 Natural & Sustainable Buffalo & Elk Products

Located in the Smiths Grocery Plaza We Ship  
 YOUR TASTE BUDS WILL OWE YOU  
[www.jhbuffalomeat.com](http://www.jhbuffalomeat.com) 800-543-6328

SPECIALIZING IN Quality 19th & Early 20th Century American furniture and fine art.

NATIONALLY RECOGNIZED for authentic Mission, Molesworth, Native American beadwork, pottery, baskets and textiles.

**FIGHTING BEAR ANTIQUES**  
 Established 1981

375 South Cache • 307-733-2669  
 Four blocks South of Town Square, Jackson



**Valentine's Ad Special:**

**FREE COLOR**

with any valentine's day ad

\* Valid for the February 8th issue  
 \* New reservations only